

*Ascorhynchus abyssi*

R488-379

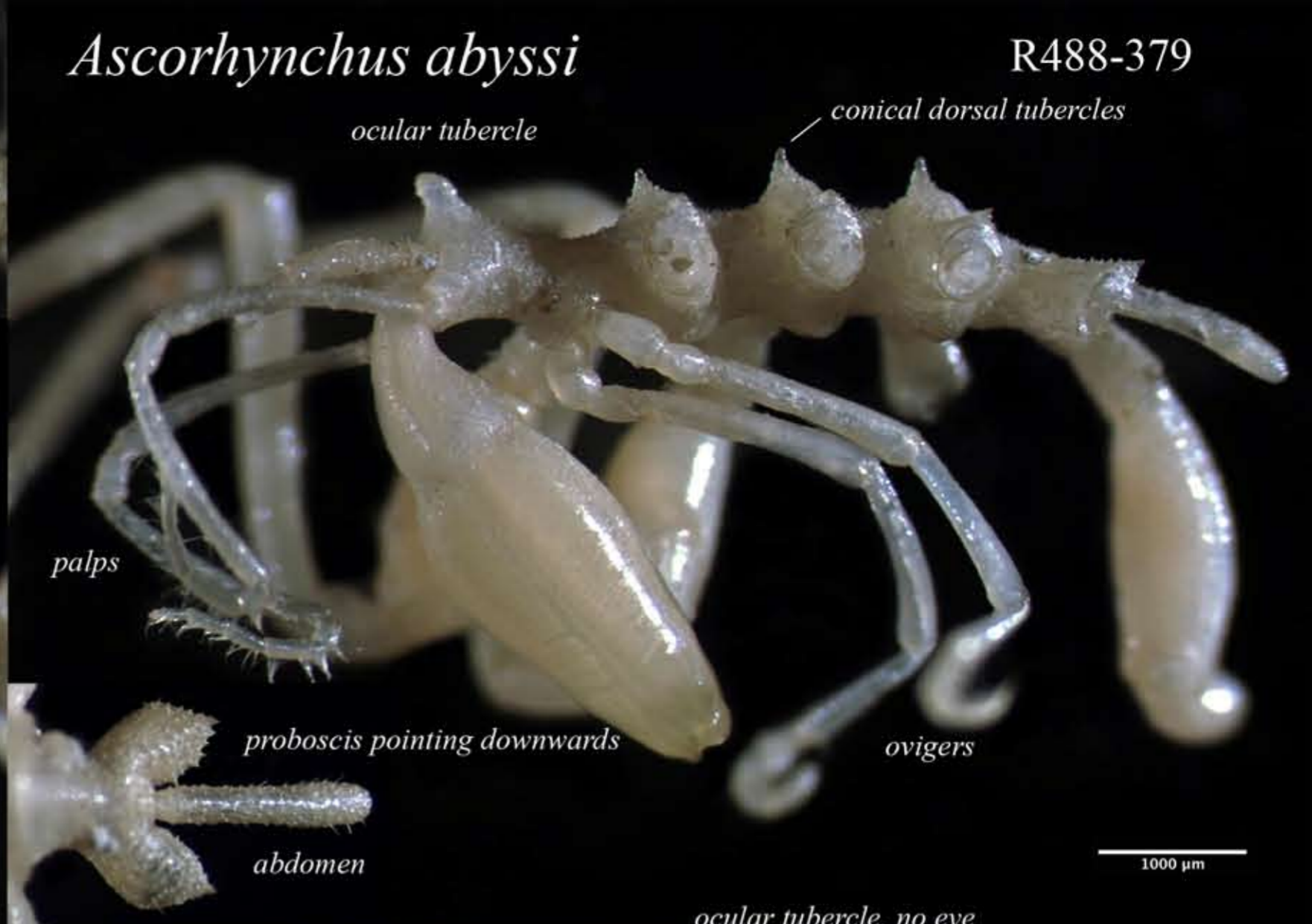


chelifores

spines on lateral processes



dorsal view



ocular tubercle

conical dorsal tubercles

palps

proboscis pointing downwards

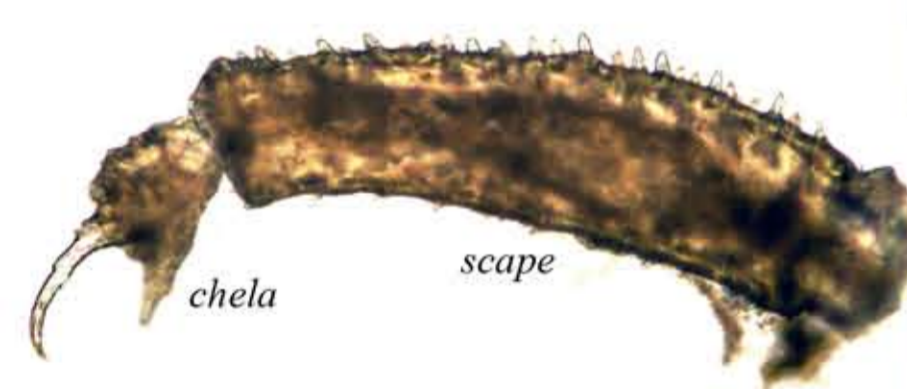
abdomen

ovigers

1000 μm



chelifores with atrophied chela



chela

scape



ocular tubercle, no eye

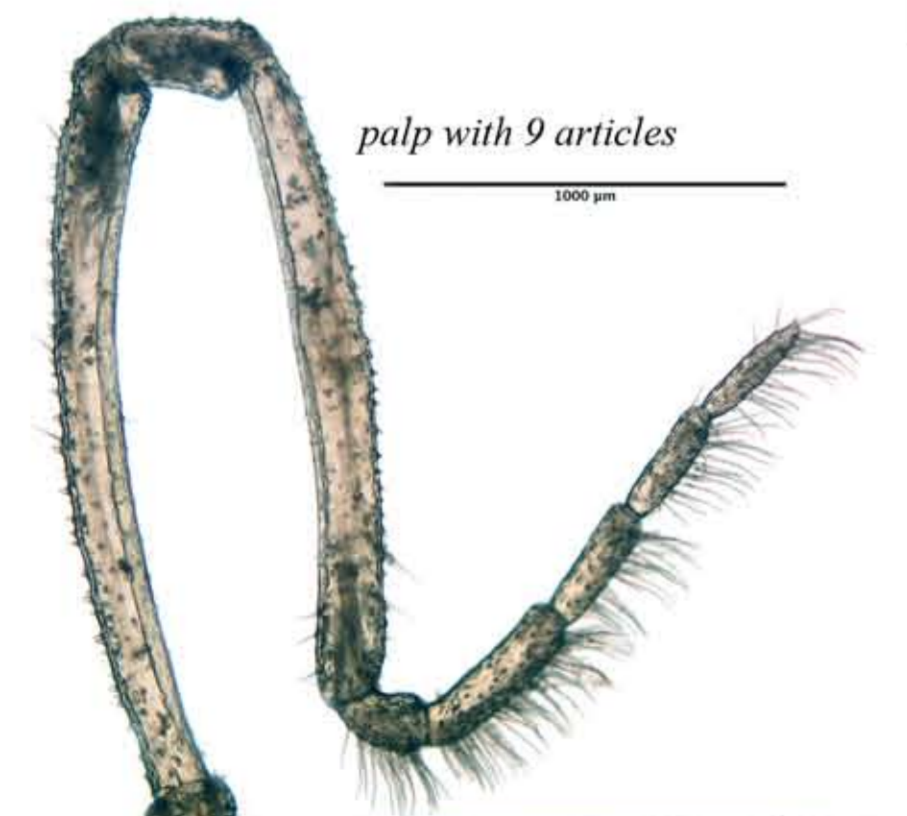
dorsal view

frontal view

lateral view

tip of proboscis

proboscis in lateral view

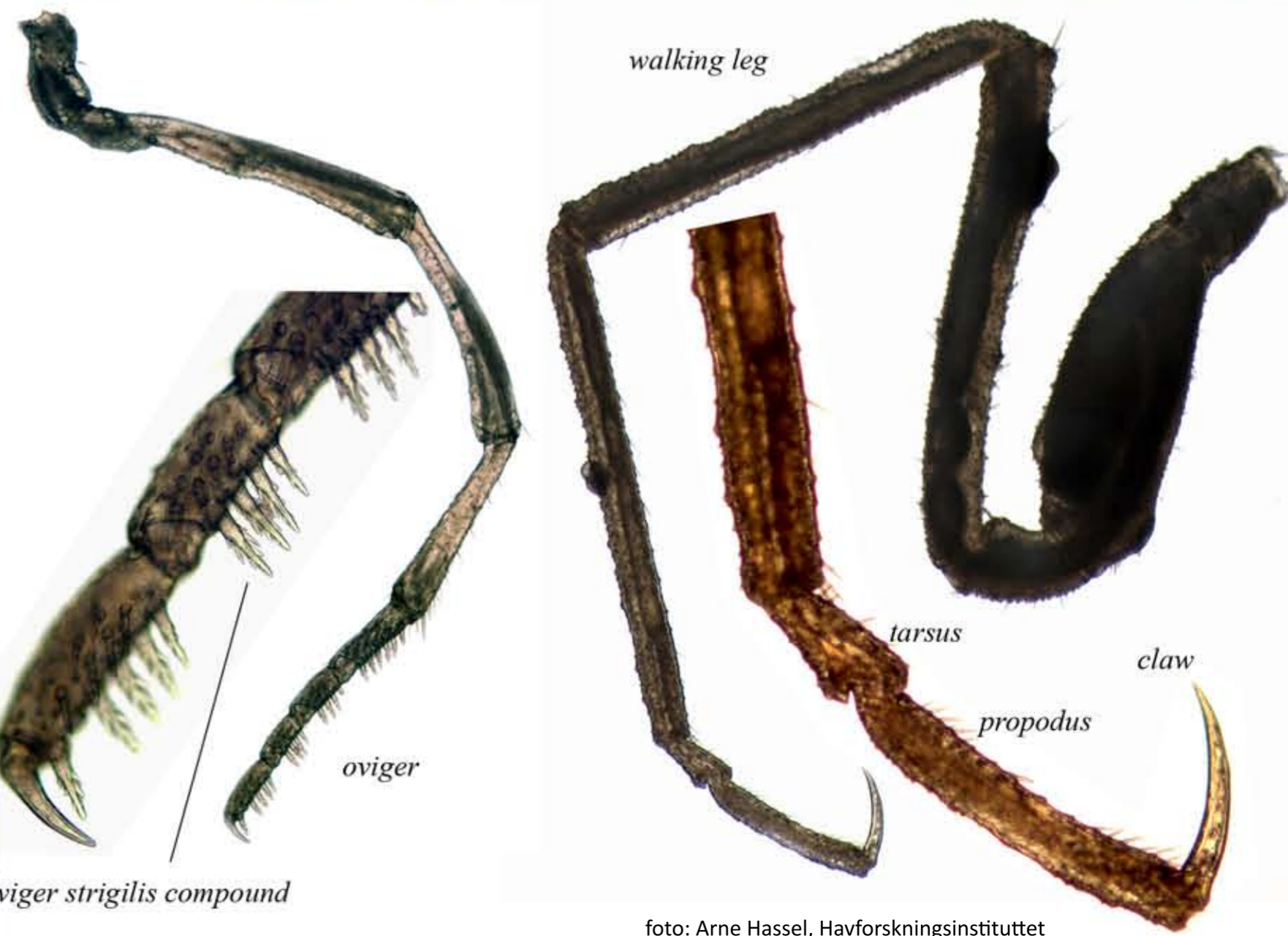


palp with 9 articles

1000 μm



oviger strigilis compound



walking leg

oviger

tarsus

propodus

claw